
C	A	T	A	L	O	G
1	APPLICATION RANGE				1
2	ADDUCTION STANDARDS				3
3	PRODUCT DESCRIPTION				3
4	SPECIFICATION				
5						
5	IDENTIFYING HARDWARE COMPONENTS				9
6	GPS ACCESSORIES LIST:				10
	▪ 7.1 ON/OFF:				11
	▪ 7.2 MUSIC PLAYER:				13
	▪ 7.3 AUDIO OUT:				17
	▪ 7.4 VIDEO PLAYER:				18
	▪ 7.5 Text Viewer:				24
	▪ 7.6 PICTURE BROWSER:				28
	▪ 7.7 GPS MONITOR:				31
	▪ 7.8 LANGUAGE SETTING:				36
	▪ 7.9 LIGHT SETTING:				37
	▪ 7.10 TOUCH-SCREEN ADJUST:				38
	▪ 7.11 SCREEN ADJUST:				38
	▪ 7.12 VOLUME ADJUST:				40
	▪ 7.13 SYSTEM SETTING				42

▪ 7.14 TIME SETTING:	43
▪ 7.15 NAVIGATION SOFTWARE:	44
▪ 7.16 PILOT LAMP:	48
8 PRECAUTION.....	錯
誤！ 尙未定義書籤。	<u>4 8</u>
9 MALFUNCTION ELIMINATION.....	49

1 APPLICATION RANGE

- The standard applies to 3.5-inch product;
- the standards for the 3.5-inch navigation products specifications parameters for use.

2 Adduction standard

- Navigation software operation standard

3 Product description

- 3.5 inch TFT touch screen, Display solution 320*240
- Double track headphone connector, 1W hi-fi speaker built in, volume can adjust
- Key-press and touch screen operate
- SiRF STAR III GPS incept model built in
- GPS antenna built in , can be connected with external antenna
- Directly run SD' s navigation software, (support SD 4mid-speed、high-speed))

- Support mp3 mp4 and so on
- Video player support: asf, avi, mp4, wmv
- Audio player support: mp3, wav, mid
- Picture browser support: BMP, JPG, PNG, GIF ;
- File browser support:: TXT
- Long-life rechargeable 3.6V lithium battery built in, (DC12V in, **CIG LIGHTER**)
- Double indicators: blue light (glows in blue to indicate working and sleeping off); the other one (glows in yellow to indicate battery charging in progress and in green when the battery is fully charged)



4 Specifications

Environment parameters	
Size	100mm*85mm*36.5mm
Operation temperature	-10°C ~ +70°C
Storage temperature	-40°C ~ +80°C
Operation humidity	45% ~ 80%RH
Storage	30% ~ 90%RH

humidity	
Atmospheric pressure	860MBar ~ 1060Mbar

System parameters	
Operation frequency	400MHZ
MCU	SAMSUNG S3C2440A-40
SDRAM	64MB
NAND FLASH	128MB
Navigation software	SD card or NAND FLASH built in
Operating system	WINCE 4.2 NET
Compiler type	ARMV4

General parameters	
TFT size	3.5inch
Display	320*240

solution	
Audio output	Mixed-track CD sound quality
Sound power	Double track earphone 0.25W/CHANNEL, single channel 8ou/1W
average power	1.5W
Idle	<20Mw
DC voltage input	9 [~] 30V
Battery	Nokia 950mAh-lithium batteries
Battery time	up to 3Hours ; 200 hours in sleeping

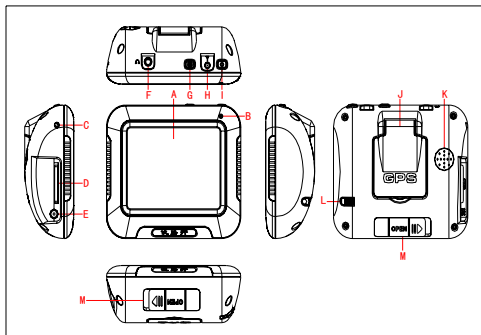
GPS hardware parameters	
Chip Set	SiRF Star III
Frequency	1.575GHZ
C/A CODE	1.023 MHZ chip rate
Channels	20 通道
Tracking	-159dBm

GPN-003 (GG-G3502) User Manual

sensitivity	
Precision	10m, 2D RMS 5m, 2D RMS, WAAS enable
rate	0.1m/s
Data update	1HZ
Requisition time	Average 0.1s
Hot start time	Average 1s
warm start time	Average 38s
Cold start time	Average 42s
Altitude (max)	18,000m
Maximum Velocity	515m/s
Acceleration	< 4g
internal Antenna	Active antenna built in
internal Antenna gain	27dB
Internal Antenna voltage	3.3V ± 5%
internal Antenna current	15mA

External antenna type	MMCX
External antenna voltage	3.3V \pm 5%
External antenna gain	27dB
External antenna current	15mA

5 Identifying hardware component



Ref	explain	Ref	explain
A	3.5 inch TFT-LCD	D	SD card in
B	Working light	E	Charged in DC12V \pm 10%/1000mA
C	reset	F	Stereo headphone socket
G	MENU Button	J	GPS antenna
H	External antenna connector	K	speaker
I	POWER	L	Touch T

6 GPS Accessories list:

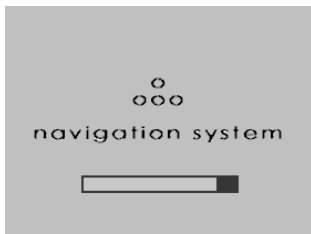
- A GPS finished product
- A Double-track headphone
- an SD Card Reader

- car full turn DC (Φ 4.0mm) lines and a charger 100~~~220V turn DC12V
- A GPS car holder
- a warranty card
- a statement

7 Operation:

7.1 On/Off operation:

- Press **“POWER”** (D) for more than 3s, indicator (B) bright, LCD show LOGO and loading item.



- In working, press **“POWER”** (D), into sleeping (thrift power), indicator(B)die, press **“POWER”** (D) again, system get right in 1s, indicator (B) bright . as following picture:



- In working, long press “**POWER**” (D) 3S, into the “power off” , indicator (B) die .as following picture:




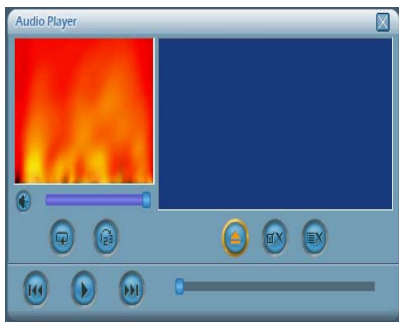
Let CIG LIGHT into DC interface (or 12V power provider), the device will show LOGO and loading cursor, about 6S onto console interface , 6 icon mode, as following picture:


7.2 Music player interface:

- In console interface , as following picture::




press “”, into music player interface, as following picture:




press “”, choose audio documentary route, into interface as following:

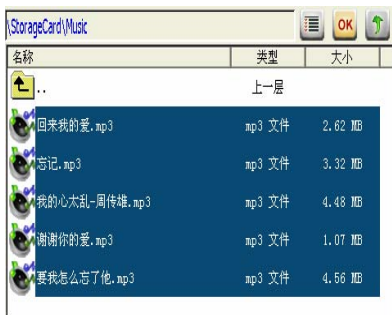



Pitch on audio file, ,click “” or dblclick file name, back to music player interface, as following picture:



click “”, can check all file, as following

picture: :





click “” to back up music player

interface.:



click “” to keep on add audio file,

click “” to back music player interface.

click “” to play music; or dblclick file

name to play, as following picture:



Other icon functions as follows:

- click “” to pause
- click “” to next
- click “” to last
- click “” to circle play single song;
- click “” to play orderly
- click “” speaker work;
- click “” speaker silence
- click “” to delete pitching file
- click “” to delete all files
- click “” to disconnect music player

interface

volume adjust in volume loading bar; play

rate adjust in play loading bar


7.3 AUDIO OUT function:

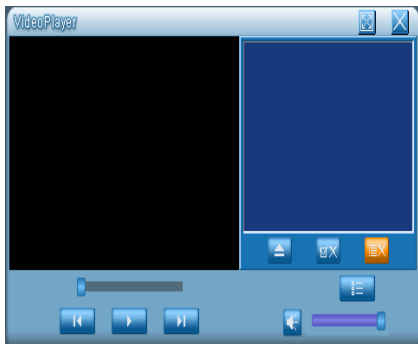
Turn on power and play audio file, plug headphone, adjust volume suitability, then listen clearly (speaker silence).


7.4 Video player interface:

- In console interface ,as following picture:

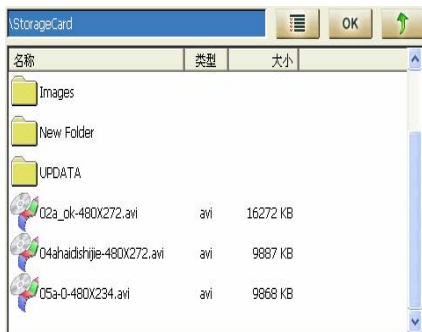



click “” into video player interface, as following picture:

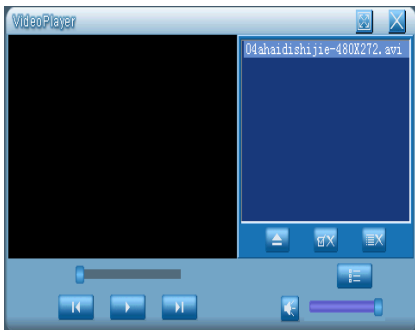



click “” to choose video file route, into

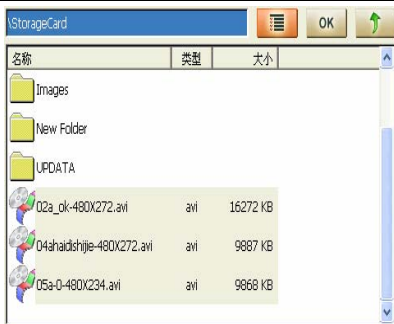
interface as follows::



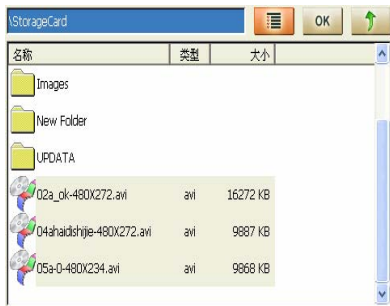
Choose video file, click “” or doubleclick file name to back video player interface, as following picture:





Or click “” to check all files, as following picture::




click”  ” to back video player interface::



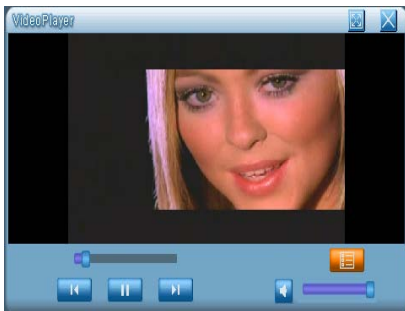
click “  ” to keep on adding video file, , click


“” to back video player.

click “” to play video; or dblclick video file name to play, as following picture::



Click “” to broaden the screen, as following picture:










Click "  " to full screen, as following picture:

:



Others icon function as following :

click "  " speaker silence;

- click “” speaker working;
- click “” to next video file;
- click “” to last video file;
- click “” to delete pitching file;
- click “” to delete all the files;
- click “” to exit music player interface.

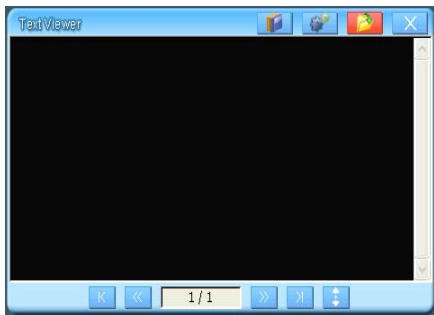
Adjusting volume in volume loading bar; play rate
in play loading bar


7.5 Text Viewer interface:

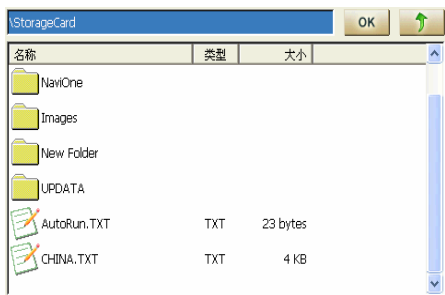
- In console interface, as following picture:




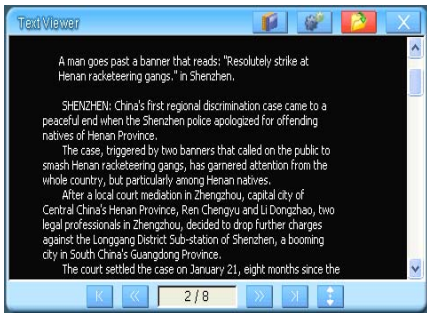
click “” into Text Viewer, as following picture:




1、click icon “” at the top right corner, choose text file’ s route, as following picture:




2、pitch on text file , click “” or dblclick file name, back to interface “Text Viewer” , as following picture:




3、click “” to show file information including file size, creat time, access time and so on , as following picture:





4、click “” to set scroll reading rate, font size , color schemes, character and background color, as following picture





Others icon functions as following:


click “” into first page;

click “” into end page;

click “” to up page;

click “” to next page;


click “” , page will roll automatically

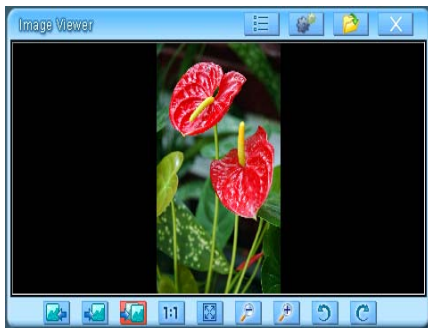
click “” to exit interface “Text Viewer” ;


7.6 mage viewer interface:

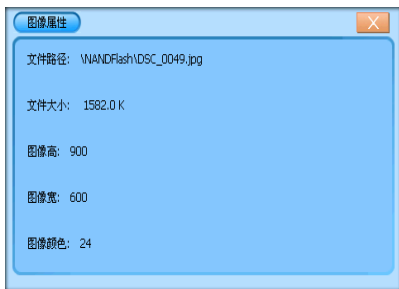
- At console, as following picture:




- Click “” into image viewer, as following picture:

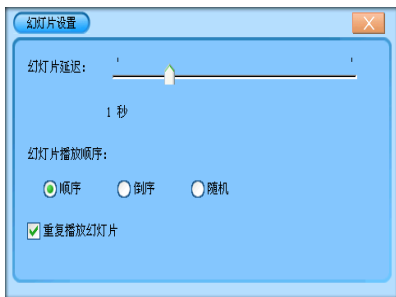



1 click “”, into image attribute, interface will show file path file size, image height, image width, color count and so on, as following picture:




2、click

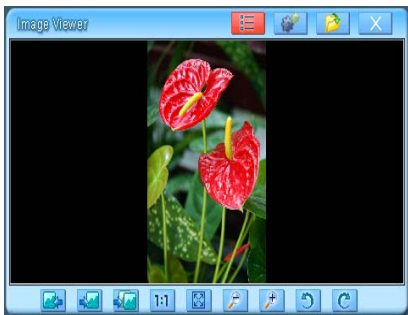
“” to set slide delay ,slide show sequence, repeat slide show and so on. As following picture:



3、click “”, choose image file path, then into interface as following picture:




Pitch on image file, click “” or dblclick file name, then exit interface “Image Viewer” as following picture:





.Pictures in the screen can be shifted to different locations with the click.


Others icon function as following:


click “” to scan front image;


click “” to scan next image ;


click “” into slide scan mode;

click “” to show fact image;

click “” to reduce image

click “” enlarge image

click “” ,circle the image left 90 degree.

click “” , circle the image right 90 degree


click “” , exit “Image Viewer” ;

7.7 **GPS monitor:**


- At console as following picture:

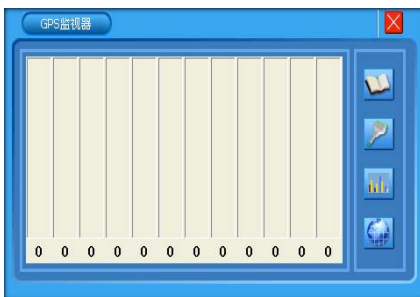



c

lick “” into setting, as following picture:





- click GPS monitor “” into GPS monitor interface, as following picture:




1、click “” on right, then ,into interface about menu explain as following picture:

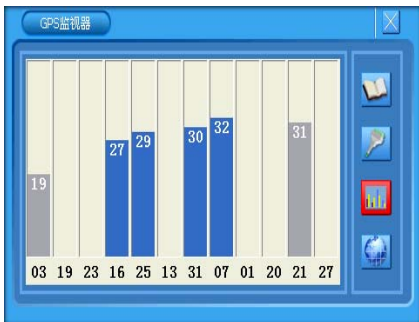



2、click “”, GPS satellites reduction of admission.

3、click “” into data stream of satellite as following picture:




4、click “” on right, into interface about satellite planet number and signal record, as following picture:



5、click “” on right, into the interface about longitude, latitude and time as following picture:




After catching information, press “

Annotate: When testing GPS monitor, the devices should be placed in the open air, or no sign as can be received.


7.8 language option:

- In setting as following picture:



- click “4



After language setting, click “” to back interface about setting

7.9 Light option:

- At setting interface as following picture:




- click “” into light setting as following


picture::



Setting lightless and backlight time ,click

“” to back system setting interface;

7.10 Touch Screen Interface operating adjustments :

7.11 At setting interface , click “”


into screen calibrating interface. According to register, do not press the center cursor until the calibrate cursor move onto top-left corner; the same way to calibrate down-left corner, down-right corner,

top-right corner. If the screen calibration does not success, it would go in the calibrate interface again. If does well, it will show “OK” . Pressing any point to save, then exit. Screen calibration will finish. The result can be memorized, whether the power is still on or not (may not calibrate every time when the power is off, yet it must be calibrated well before leaving factory.) ◦

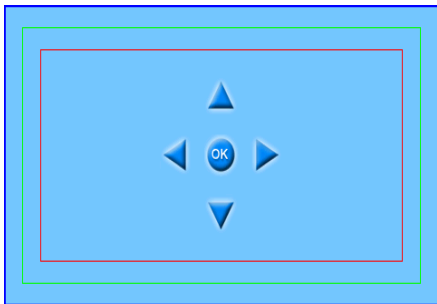
7.12 SCREEN ADJUST:


- At setting interface as following picture:



click “” into screen adjustment as following

picture




choose press-up , down, left, right to adjust the image position where AV OUT show, click “  ” to back system setting interface;;


7.13 Volume adjust:

- At setting interface as following pictures:



- click “” into system volume as following picture::




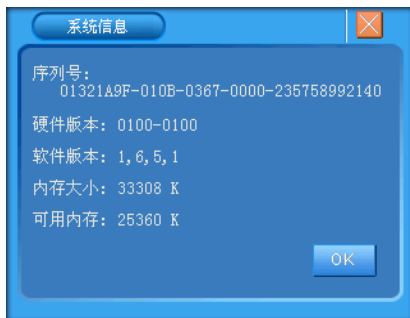
set volume , mute, key-click volume and screen-click volume ,click “” to back setting interface;

7.14 system setting

- In system setting as following:



- chooses “” into system information as following picture, :

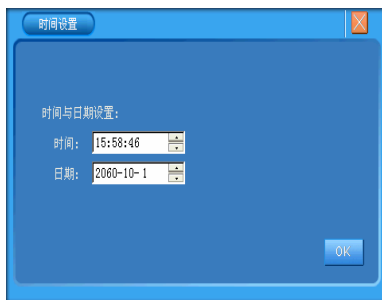



7.15 Time setting:

- At setting interface as following picture:



click “” into time setting as following picture




First click what you want to set, then click press-up or press-down , the last click “  ” to back system setting interface。


7.16 NAVIGATION SOFTWARE:

Cut in the SD card with navigation software, at console as following picture: :

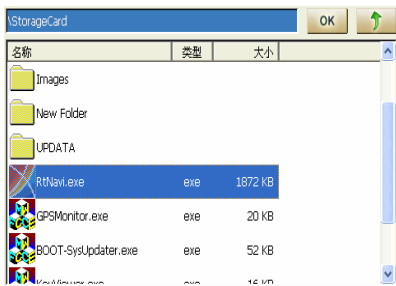


“click “  ” into setting interface as following picture: VV:




Click navigation option “” into as following picture::






click “” into as following picture:

Choose navigation software according to it' s path(you can choose working navigation software again) , click “” to back console as following picture::



click “” into navigation interface, operation according to navigation software operation explain



7.17 PILOT LAMP:

- The blue is system working pilot lamp, glows in blue still to indicate that system working.
- The yellow is the battery charge pilot, glows in yellow to indicate that battery charge is in progress and in green when the battery is fully charged
- At system working , press “**MENU**” to back console interface.
- Long press “**POWER**” (3s) to open or close system, short-press “**POWER**” into sleeping or arouse sleeping
- press “**RETURN**” to back parent menu operation;

8 PRECAUTION

- The device should be kept in the environment in which high temperature, dewiness, and more dust are not allowed.
- Avoiding pressing the items when delivery
- GPS antenna should be placed flat and face to sky
- Connecting external antenna out of the car if the car has been installed with metal sticks
- The icon frame shows orange when being choosen; the icon shows orange after pitching the icon.

Malfunction elimination

TROUBLE	REASON	SETTLE WAY
Fail to turn on	long time to play car changer lost line.	charge again affirm car changer line connected well
No signal	Did not stand in void place	Please get signal in void place
Battery used up quickly	Operation in lowest temperature; using is fall short of use way ;battery aging	Avoid to use when high temperature , low temperature ;instead high-powered charge battery or car charger power supply
Can not into navigation mode	Make sure navigation setting well	Reinstall navigation path

Display not clearly	TFT LCD display faintness	TFT LCD wipe up clearly by fabric
No sound	Volume adjust min	Adjust volume in menu
Touch function abnormality	no screen calibration	Please screen calibrate again
Date/time show wrong		Reset date/time
All key can not operate 作	LOCK is on	press“RESER”, turn on again. Turn LOCK open